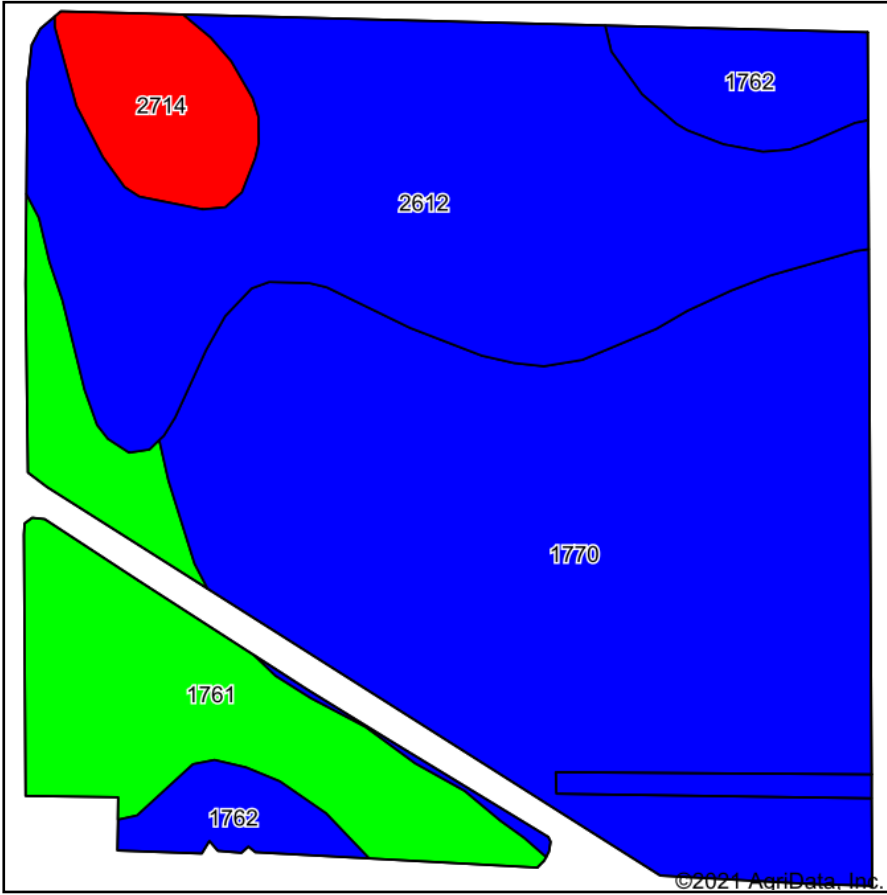
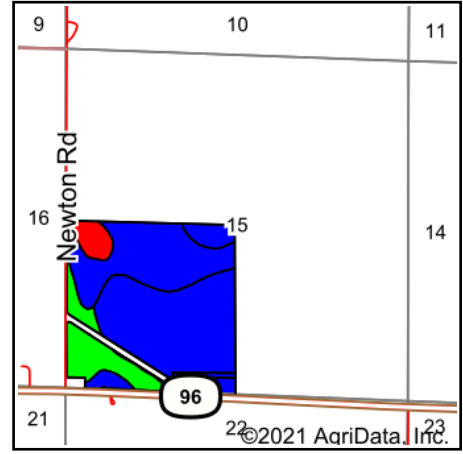


Soils Map



Soils data provided by USDA and NRCS.



State: **Kansas**
 County: **Lane**
 Location: **15-18S-28W**
 Township: **Dighton**
 Acres: **148.41**
 Date: **1/18/2021**



Maps Provided By:



Code	Soil Description	Acres	Percent of field	Non-Irr Class Legend	Non-Irr Class *c	Irr Class *c
1770	Richfield-Ulysses silt loams, 1 to 3 percent slopes	68.91	46.4%		Ile	Ile
2612	Harney silt loam, 0 to 1 percent slopes	43.78	29.5%		Ilc	I
1761	Richfield silt loam, 0 to 1 percent slopes	20.55	13.8%		IIIc	I
1762	Richfield silt loam, 1 to 3 percent slopes	8.76	5.9%		Ile	Ile
2714	Ness clay	6.41	4.3%		VIw	

*c: Using Capabilities Class Dominant Condition Aggregation Method
 Soils data provided by USDA and NRCS.