

# LAND AUCTION

## GREENWOOD COUNTY, KANSAS

# *Pasture & Hunting Land*

FEBRUARY 25TH, 10:00AM CT

1,432± ACRES OFFERED  
IN 3 TRACTS & COMBINATIONS



HALL AND HALL®

Exceptional Auction Properties

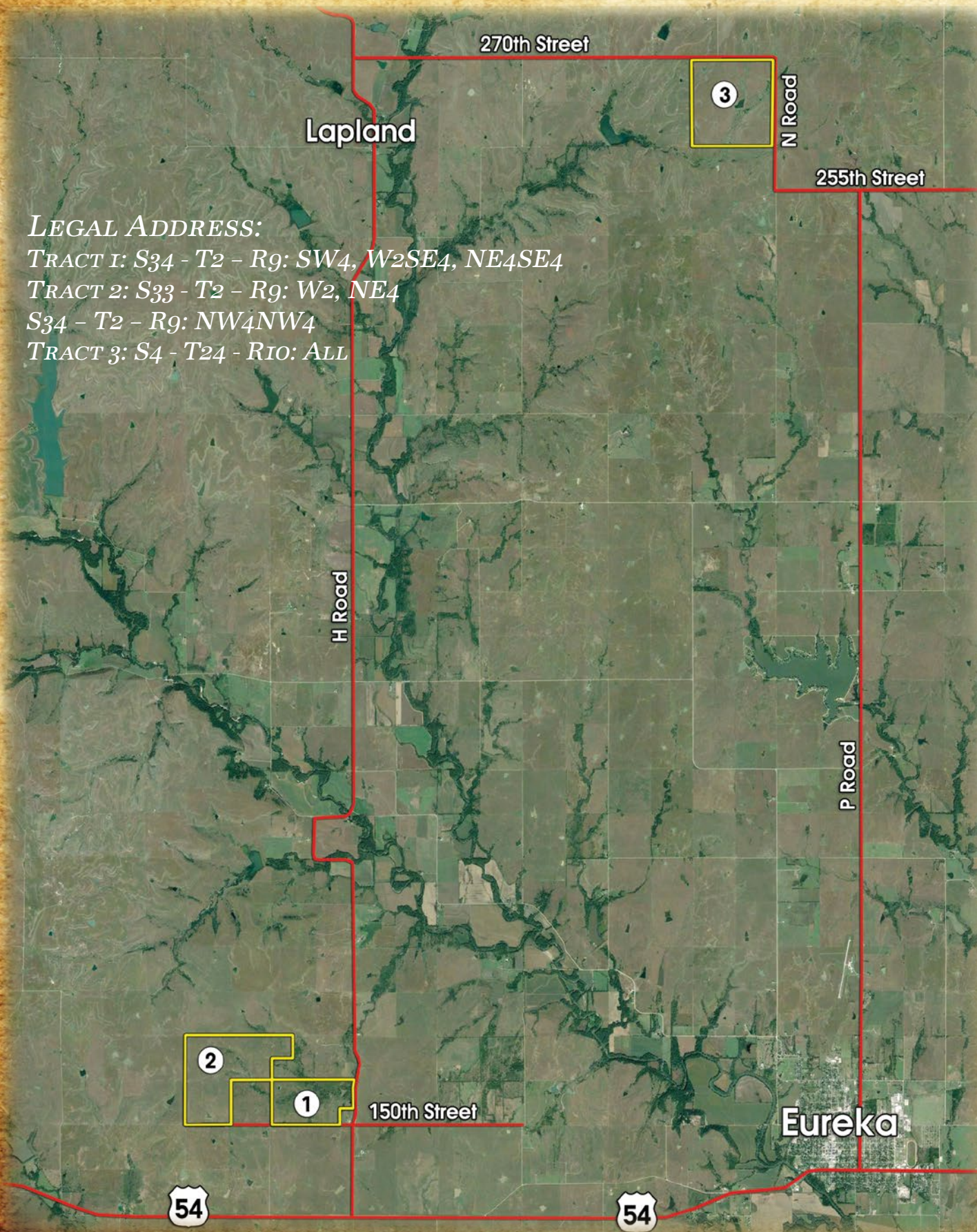
[WWW.HALLANDHALL.COM](http://WWW.HALLANDHALL.COM) | [AUCTIONS@HALLANDHALL.COM](mailto:AUCTIONS@HALLANDHALL.COM) | 800.829.8747

ACREAGE BREAKDOWN ~ 1,432 ± ACRES IN 3 TRACTS OR COMBINATIONS

TRACT 1: 277 ± ACRES

TRACT 2: 520 ± ACRES

TRACT 3: 635 ± ACRES



*LEGAL ADDRESS:*

*TRACT 1: S34 - T2 - R9: SW4, W2SE4, NE4SE4*

*TRACT 2: S33 - T2 - R9: W2, NE4*

*S34 - T2 - R9: NW4NW4*

*TRACT 3: S4 - T24 - R10: ALL*

- *The Ranch offers excellent greenwood county pasture!*
- *Trophy whitetail deer, turkey, prairie chicken & quail hunting!*
- *Live creek and numerous spring fed ponds makes this property a hunter's paradise!*

AUCTION DATE & LOCATION  
 FEBRUARY 25TH, 10:00AM CT  
 EL DORADO CIVIC CENTER  
 201 E. CENTRAL  
 EL DORADO, KS 67042

*DIRECTIONS TO PROPERTY:*

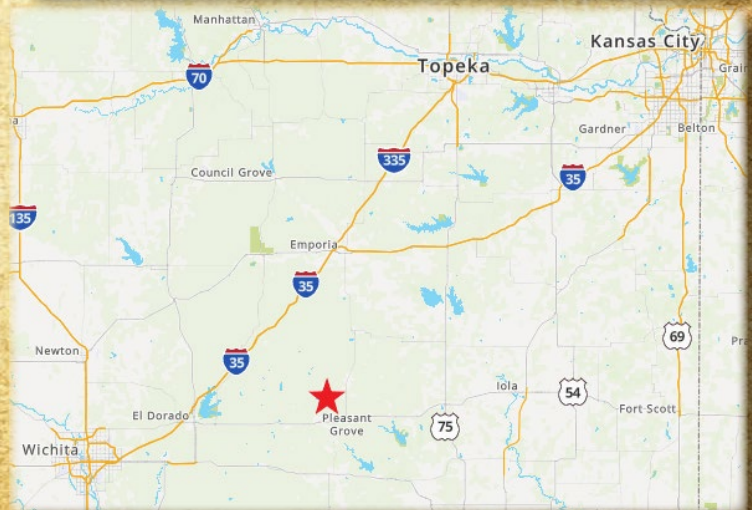
*TRACT I & 2:*

*FROM EUREKA, KS; HEAD WEST ON HWY 54 FOR 5.5 MILES. TURN NORTH ON H RD AND PROCEED FOR 1 MILE. TURN WEST ON 150TH ST AND PROCEED TO PROPERTY ON THE NORTH.*

*TRACT 3:*

*FROM EUREKA, KS; HEAD NORTH ON P RD FOR 10.5 MILES. TURN WEST ON 255TH ST AND PROCEED FOR 1 MILE. TURN NORTH ON N RD AND PROCEED FOR ½ MILE TO PROPERTY ON THE WEST.*

LOCATED JUST 50 MILES FROM WICHITA, KS



..... HALL AND HALL .....

# AUCTIONS

100 S. CHERRY AVENUE, SUITE 6D  
EATON, CO 80615  
WWW.HALLANDHALL.COM  
1-800-829-8747

Broker: John Wildin KS 17131

## PRIME LOCATION!

# LAND AUCTION

## 1,432± ACRES ~ 3 PREMIUM TRACTS

## GREENWOOD COUNTY, KS

HELD AT THE EL DORADO CIVIC CENTER

FEBRUARY 25TH, 10:00 AM CT



## 50 MILES EAST OF WICHITA, KS...

## ABUNDANT GRASS AND EXCELLENT HUNTING!

### SUMMARY OF TERMS:

- A 10% EARNEST MONEY DEPOSIT OF THE TOTAL CONTRACT PRICE WILL BE DUE IMMEDIATELY FROM ALL SUCCESSFUL BIDDERS.
- THE PROPERTY IS BEING SOLD "AS IS, WHERE IS" AND WITHOUT ANY CONTINGENCIES, INCLUDING FINANCING.
- CLOSING WILL BE SET 30 DAYS FROM THE AUCTION DATE OR AS SOON THEREAFTER AS CLOSING DOCUMENTS ARE AVAILABLE.

