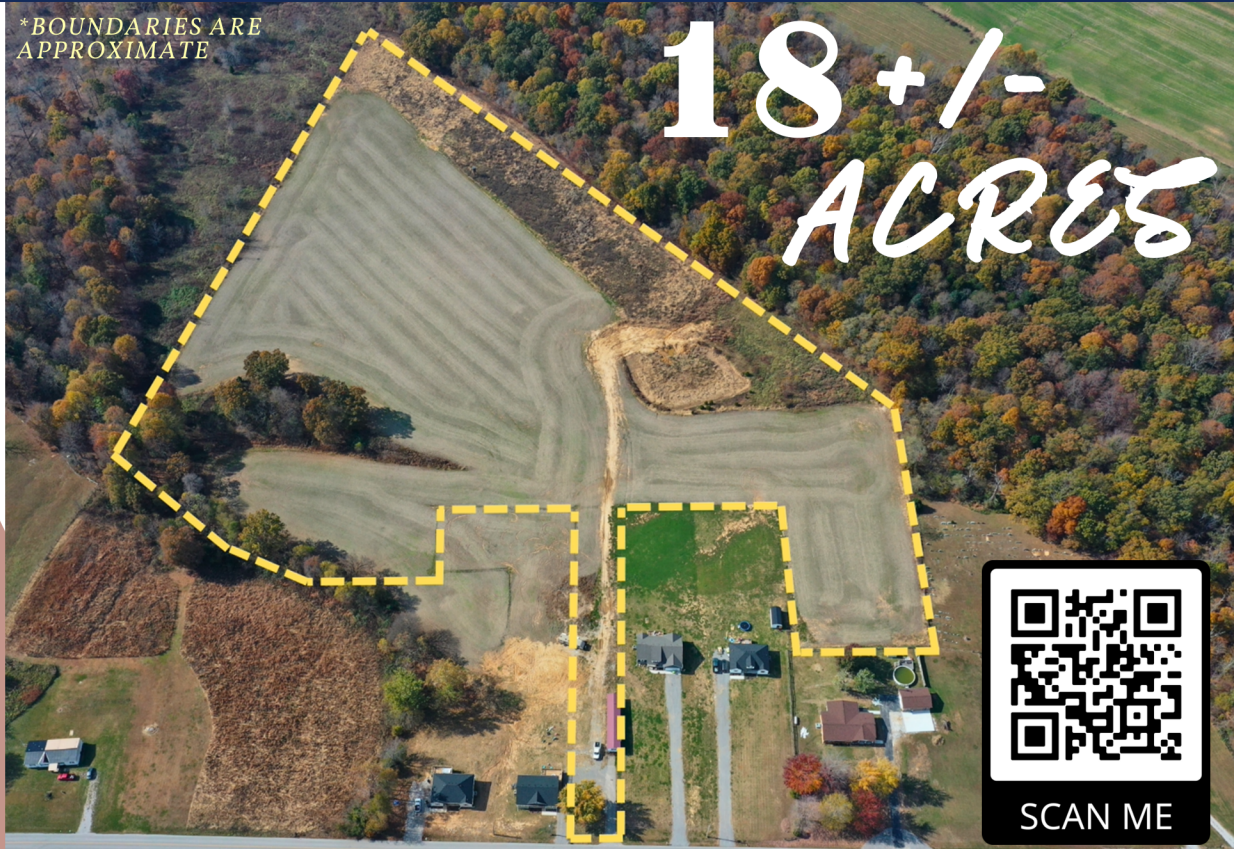




ABUNDANCE
OF WILDLIFE
BEAUTIFUL
BUILDING SITES
ACCESS FROM
POND RIVER RD

*BOUNDARIES ARE
APPROXIMATE



18+/- ACRES

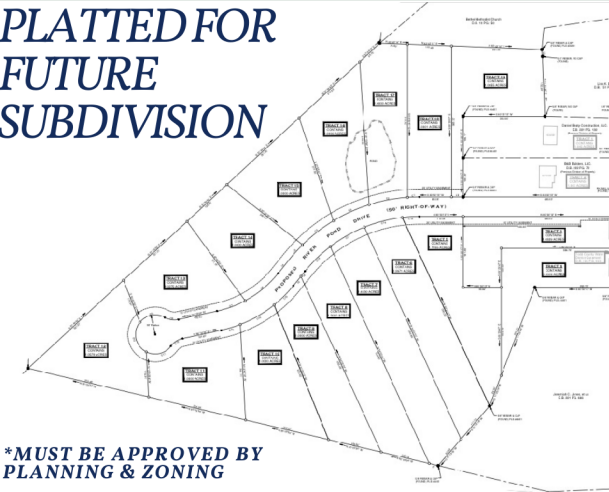


SCAN ME

POND RIVER ROAD, ELKTON

Tuesday December 12th at 6pm CST

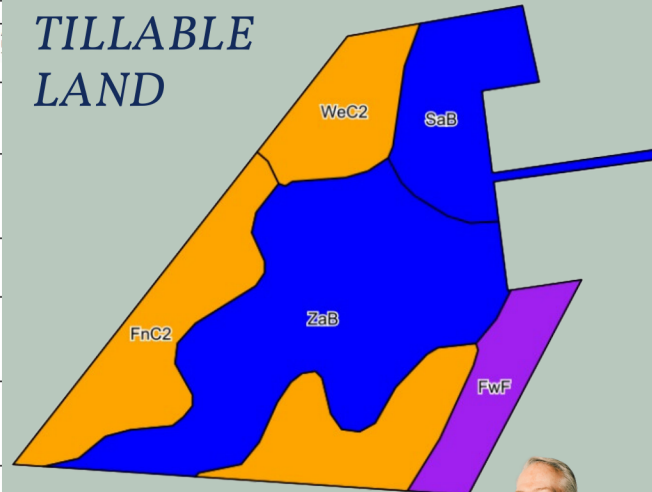
PLATTED FOR
FUTURE
SUBDIVISION



*MUST BE APPROVED BY
PLANNING & ZONING

| Area Symbol: KY219, Soil Area Version: 21 | | | | | |
|---|--|-------|------------------|----------------------|-------------------|
| Code | Soil Description | Acres | Percent of field | Non-Irr Class Legend | Non-Irr Class "c" |
| ZaB | Zanesville silt loam, 2 to 6 percent slopes | 7.19 | 40.1% | | Ile |
| FnC2 | Fondorf silt loam, 6 to 12 percent slopes, eroded | 4.95 | 27.6% | | Ile |
| SaB | Sadler silt loam, 2 to 6 percent slopes | 2.55 | 14.2% | | Ile |
| WeC2 | Wellston silt loam, 6 to 12 percent slopes, eroded | 1.72 | 9.6% | | Ile |
| FwF | Fondorf-Weikert complex, 20 to 45 percent slopes | 1.52 | 8.5% | | Vile |
| Weighted Average | | | 2.80 | | |

TILLABLE
LAND



SIMULCAST BIDDING AVAILABLE! PRE-BIDDING BEGINS DEC. 5TH

BolingerRealEstate.com

LIVE AUCTION HELD AT THE MILLIKEN HOUSE

Auction Contact
Kelvin DeBerry
270-604-2536



Real Estate Terms and Conditions: NO Buyer's Premium, 10% down payment and closing in 45 days. Selling "AS IS, WHERE IS." See Our Website at BolingerRealEstate.com for full Terms & Conditions.

BEN BOLINGER, PRINCIPAL BROKER/AUCTIONEER

110 JOHN RIVES ROAD HOPKINSVILLE KY | 270.632.8882 | INFO@BOLINGERREALESTATE.COM