

AUCTIONS

NJ Municipal Auctions



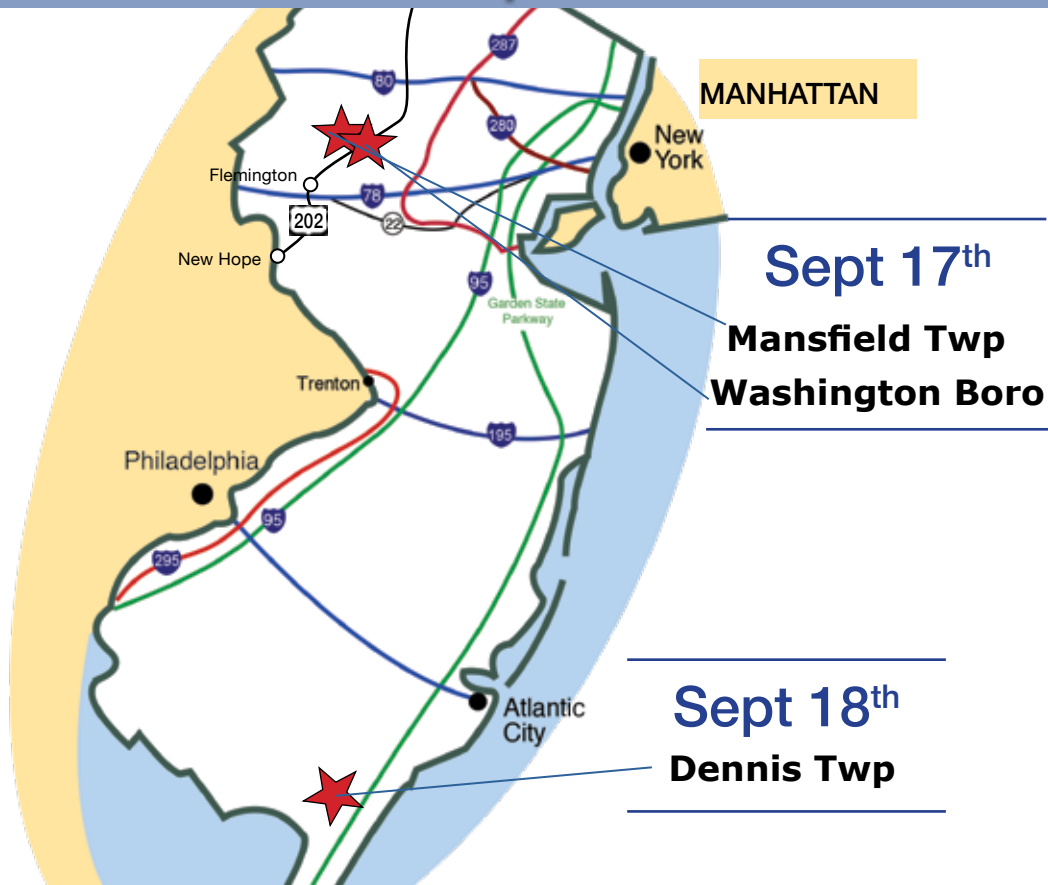
Max Spann Real Estate & Auction Co.
P. O. Box 4992
Clinton, New Jersey 08809
A licensed NJ Real Estate Broker



OFFICES: NEW YORK - NEW JERSEY - FLORIDA
888-299-1438 | maxspann.com

Bid On-Line!

Get the Max Spann Smartphone App or go on-line



AUCTIONS

NJ MUNICIPAL AUCTIONS

September 17th & 18th

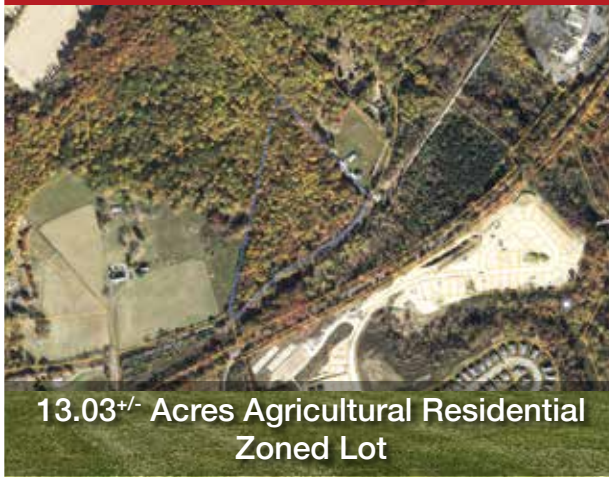
By Order of Washington Boro,
Warren County

By Order of Mansfield Twp,
Warren County

By Order of Dennis Twp,
Cape May County



7 Properties – Residential,
Commercial and Light Industrial



13.03^{+/-} Acres Agricultural Residential
Zoned Lot



100^{+/-} Lots and Structures Throughout
the Township

NJ MUNICIPAL AUCTIONS



By Order of Washington Boro,
Warren County

Seven Opportunities – Residential Lots, Central Business Zoned Lot, and Industrial Zoned Lot Ready for Redevelopment

Living in Washington Borough, Warren County, NJ offers a unique blend of small-town charm and modern convenience. Residents enjoy a tight-knit, welcoming community with a rich history and a strong sense of local pride. The Borough features over 100 acres of parks and green space, perfect for outdoor recreation, family activities, and community events. Its location provides easy access to major highways like Routes 31 and 57, offering a smooth commute to larger employment hubs while maintaining a peaceful, suburban lifestyle.



Bid on one, two or several!

Download the Property Information Package from maxspann.com and then drive-by and preview the properties when convenient.

Online Bidding Concludes Wednesday, September 17, 2025 at 11am

Pkg	Block	Lot	Desc.	Address	Acres +/-	Zone
1	6	36	Lot	149 N Lincoln Ave	0.11	R-3
2	24	35.01	Lot	18 Belvidere Ave Rear	0.10	B-2
3	31	6	Structure	44 Taylor St	0.08	R-3
4	31	8	Lot	48 Taylor St	0.16	R-3
5	35	15	Structure	125 Taylor St	1.90	I
6	50	4	Lot	29 McKinley Ave	0.45	R-2
	50	5	Lot			
	50	5.01	Lot			
7	77	1	Lot	115 Railroad Ave	0.63	R-2



By Order of Mansfield Twp,
Warren County

13.03+/- Acres Agricultural Zoned Property

Block: 601.03 Lot: 55

- Scenic Rural Setting: Enjoy peaceful surroundings with rolling hills, wooded areas, and open fields, ideal for private estates, hobby farms, or nature retreats.
- Mansfield Twp, located near Routes 57, 31, and I-78, offers easy commuting to Clinton, Phillipsburg, and the Lehigh Valley.

Property Address: Route 57, Mansfield Twp, Warren County, NJ

Online Bidding Concludes Wednesday, September 17, 2025 at 11am



By Order of Dennis Twp,
Cape May County

100+/- Lots and Structures - Sold Individually and in

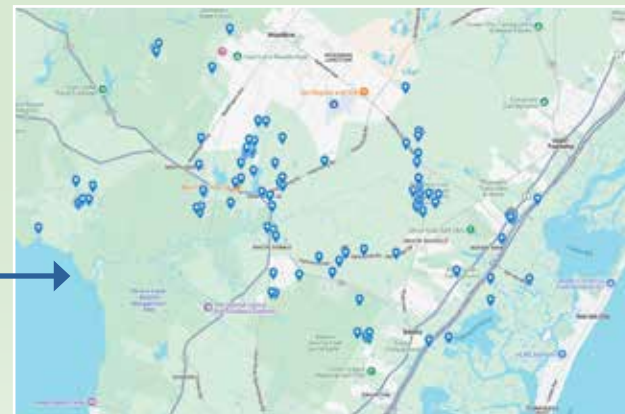
Residential and Commercial Parcels Bid on One, Two or Several!

- Outdoor Paradise: Home to Belleplain State Forest, the largest woodland tract on the Jersey Cape—perfect for hiking, biking, camping, and birdwatching.
- Family-Friendly Living: With excellent schools, community events, and a strong neighborly spirit, it's a place where families thrive.
- Natural Beauty: Thousands of acres of untouched land, freshwater and saltwater fishing, and scenic trails make it a haven for nature lovers.
- Convenient Location: Just minutes from the Delaware Bay and Jersey Shore beaches, with easy access to major highways and nearby towns.

Join the maxspann.com Bidders-Club and download the property information package, then, drive-by the properties and note your favorites!

Online Bidding Concludes Thursday, September 18, 2025 at 11 am

Complete List of Properties
and Interactive Map
Available at
maxspann.com



THE AUCTION ADVANTAGE

Interested in selling a property?

Click the QR code to find out
more about the auction process.



888-299-1438
MAXSPANN.COM

OVER 50 YEARS OF TRUSTED SERVICE

SERVING THE NATION

OFFICES: NEW YORK - NEW JERSEY - FLORIDA

