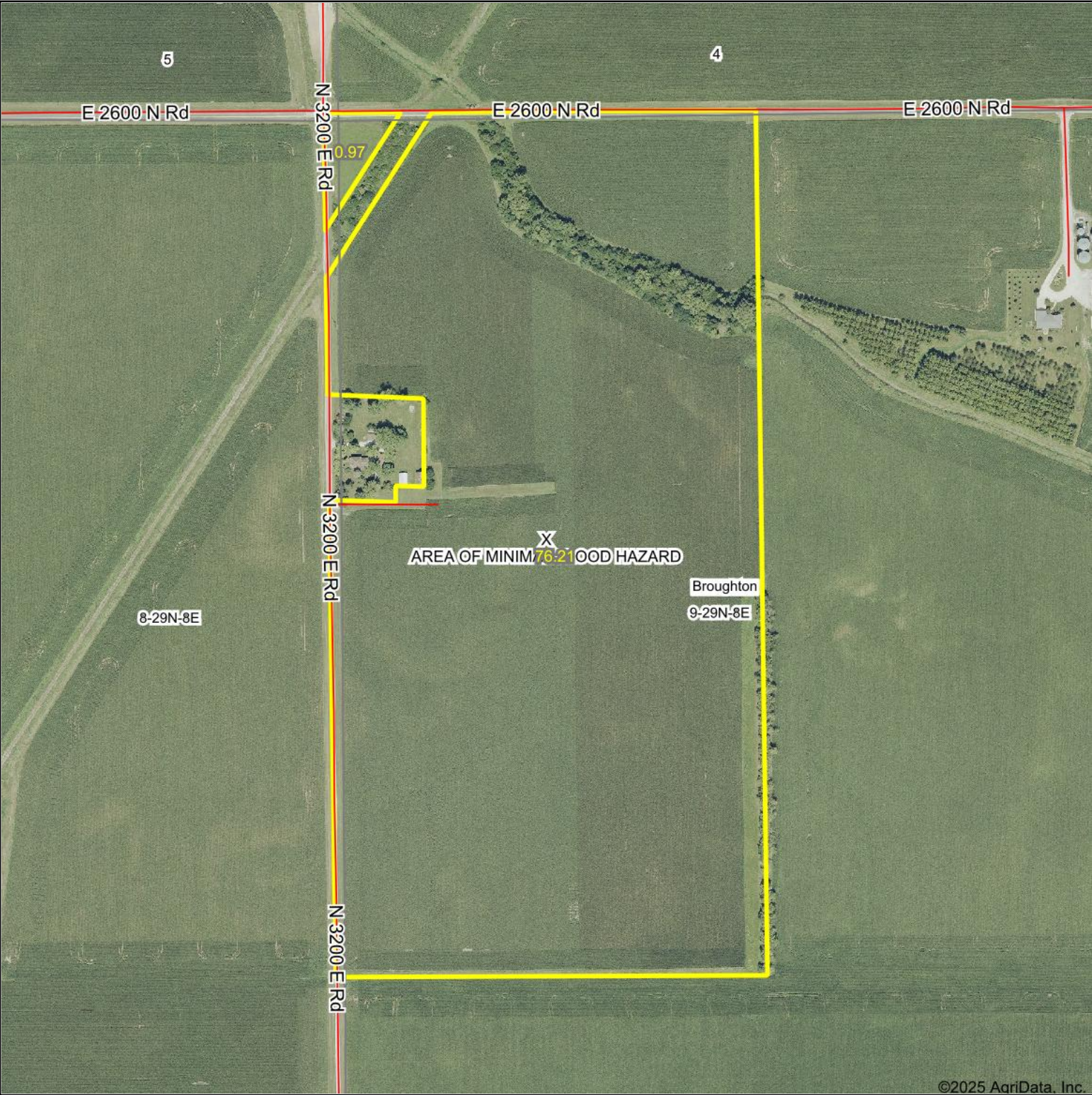





Aerial Map





Boundary Center: 41° 0' 16.33, -88° 19' 18.13


9-29N-8E
Livingston County
Illinois



0ft 477ft 955ft

©2025 AgriData, Inc.

Maps Provided By:



© AgriData, Inc. 2023 www.AgriDataInc.com

Flood related information provided by FEMA

9/22/2025