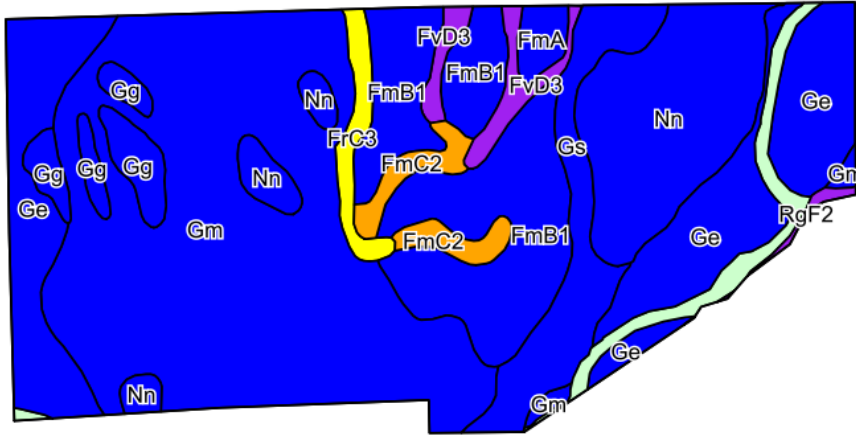
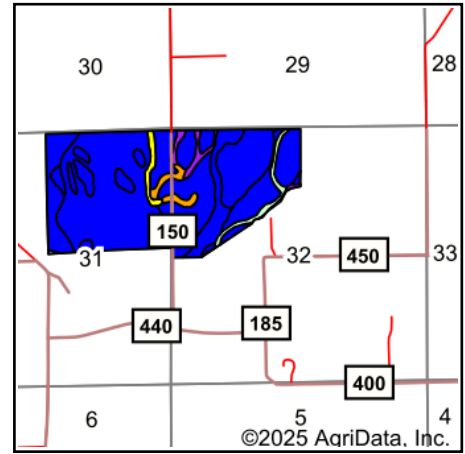


Soils Map



©2025 AgriData, Inc.

Soils data provided by USDA and NRCS.



©2025 AgriData, Inc.

State: **Indiana**
 County: **Fayette**
 Location: **32-15N-13E**
 Township: **Waterloo**
 Acres: **275.42**
 Date: **11/19/2025**

SCHRADER
 Real Estate and Auction Company, Inc.

Maps Provided By:
surety
 CUSTOMIZED ONLINE MAPPING
 © AgriData, Inc. 2025 www.AgriDataInc.com



Area Symbol: IN041, Soil Area Version: 25

Code	Soil Description	Acres	Percent of field	Non-Irr Class Legend	Non-Irr Class	Corn Bu	Grass legume hay Tons	Pasture AUM	Soybeans Bu	Winter wheat Bu
Gm	Genesee loam	101.27	36.8%		Ilw	116			41	46
Ge	Genesee fine sandy loam	46.15	16.8%		Ilw	111			39	45
FmB1	Fox loam, 2 to 6 percent slopes, slightly eroded	41.41	15.0%		Ile	100	3	7	35	50
Nn	Nineveh loam	34.20	12.4%		Ils	110	4	7	35	55
Gs	Genesee silt loam, 0 to 2 percent slopes, frequently flooded, brief duration	17.09	6.2%		Ilw	121		1	42	3
Gg	Genesee gravelly loam	8.58	3.1%		Ilw	111			39	
W	Water	7.02	2.5%							
FmC2	Fox loam, 6 to 12 percent slopes, moderately eroded	6.02	2.2%		Ille	85	3	6	30	43
FvD3	Fox and Rodman soils, 12 to 18 percent slopes, severely eroded	5.45	2.0%		Ve	48	2	3	17	24
FrC3	Fox soils, kames, 6 to 12 percent slopes, severely eroded	4.65	1.7%		IVe	80	3	5	28	40
FmA	Fox loam, 0 to 2 percent slopes	2.84	1.0%		Ils	106	3	7	37	52
RgF2	Rodman gravelly loam, 25 to 50 percent slopes, eroded	0.74	0.3%		Vlle					
Weighted Average					*-	106.2	1.1	2.3	36.9	41.6

*- Non Irr Class weighted average cannot be calculated on the current soils data due to missing data.

Soils data provided by USDA and NRCS.